



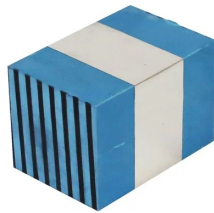
# Roxtec RM PE solid compensation module

Roxtec RM modules are 60 mm (2.362") deep. The PE version of the solid module provides excellent performance for EMI applications and protects against conducted EMI.

🔗 To be used with corresponding Roxtec components to form a complete sealing solution



RM 40/0 PE B back



RM 40/0 PE

## RM PE

Product	Number of cables/pipes	For cable/pipe Ø (mm)	External dimensions WxHxD (mm)	Weight (kg)	Art. No
RM 5w120/0 PE	0	0 - 0	120 x 5 x 60	0.05	PRM0305121181
RM 10/0 PE	0	0 - 0	10 x 10 x 60	0.1	PRM0300101181
RM 10w120/0 PE	0	0 - 0	120 x 10 x 60	0.1	PRM0310121181
RM 15/0 PE	0	0 - 0	15 x 15 x 60	0.02	PRM0300151181
RM 20/0 PE	0	0 - 0	20 x 20 x 60	0.04	PRM0300201181
RM 30/0 PE	0	0 - 0	30 x 30 x 60	0.08	PRM0300301181
RM 30H90/0 PE	0	0 - 0	30 x 90 x 60	0.25	165312
RM 40/0 PE	0	0 - 0	40 x 40 x 60	0.14	PRM0300401181
RM 40H80/0 PE	0	0 - 0	80 x 40 x 60	0.29	173587
RM 60/0 PE	0	0 - 0	60 x 60 x 60	0.32	PRM0300601181

## RM PE B

Product	Number of cables/pipes	For cable/pipe Ø (mm)	External dimensions WxHxD (mm)	Weight (kg)	Art. No
RM 5w120/0 PE B	0	0 - 0	5 x 5 x 60	0.05	PRM1351201181
RM 10/0 PE B	0	0 - 0	10 x 10 x 60	0.01	PRM1300101181
RM 10w120/0 PE B	0	0 - 0	120 x 10 x 60	0.1	PRM1310121181
RM 15/0 PE B	0	0 - 0	15 x 15 x 60	0.02	PRM1300151181
RM 20/0 PE B	0	0 - 0	20 x 20 x 60	0.04	PRM1300201181
RM 30/0 PE B	0	0 - 0	30 x 30 x 60	0.08	PRM1300301181
RM 30H90/0 PE B	0	0 - 0	30 x 90 x 60	0.08	165311
RM 40/0 PE B	0	0 - 0	40 x 40 x 60	0.14	PRM1300401181
RM 40H80/0 PE B	0	0 - 0	40 x 80 x 60	0.3	173589
RM 60/0 PE B	0	0 - 0	60 x 60 x 60	0.32	PRM1300601181